

# Predicted High Park Fire Flood Response: Redstone Creek



USDA Natural Resources Conservation Service

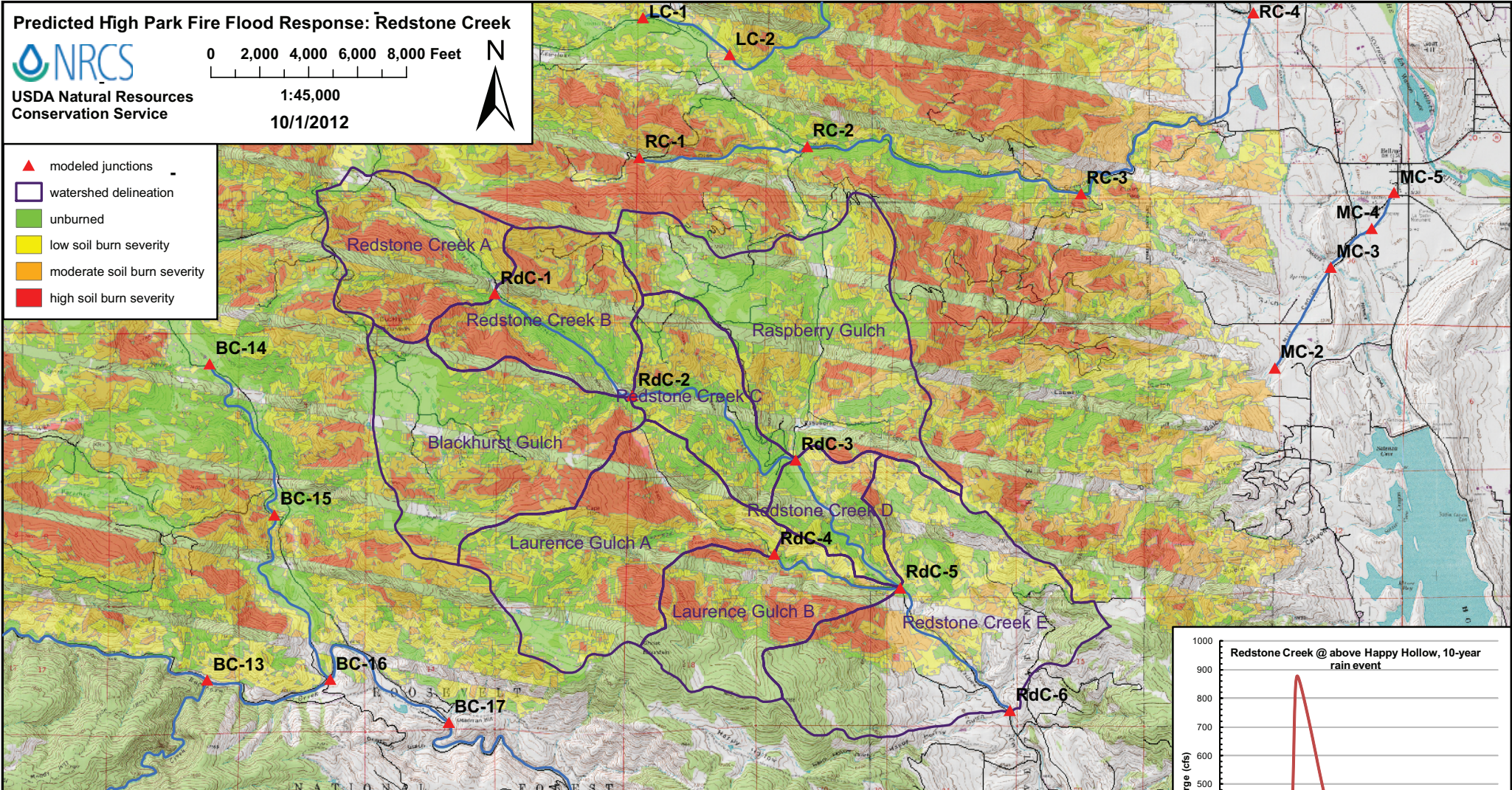
0 2,000 4,000 6,000 8,000 Feet

1:45,000

10/1/2012



- ▲ modeled junctions
- watershed delineation
- unburned
- low soil burn severity
- moderate soil burn severity
- high soil burn severity



Junction or Catchment	Drainage Area (mi <sup>2</sup> )	2-Year Rain Event (0.8 inches)				10-Year Rain Event (1.5 inches)				25-Year Rain Event (1.8 inches)				50-Year Rain Event (2.2 inches)				100-Year Rain Event (2.4 inches)			
		Predicted Flow (cfs)		Post/Pre	Sed. Bulking	Predicted Flow (cfs)		Post/Pre	Sed. Bulking	Predicted Flow (cfs)		Post/Pre	Sed. Bulking	Predicted Flow (cfs)		Post/Pre	Sed. Bulking	Predicted Flow (cfs)		Post/Pre	Sed. Bulking
		Pre Fire	Post Fire	Peak Flow	Flow (cfs)	Pre Fire	Post Fire	Peak Flow	Flow (cfs)	Pre Fire	Post Fire	Peak Flow	Flow (cfs)	Pre Fire	Post Fire	Peak Flow	Flow (cfs)	Pre Fire	Post Fire	Peak Flow	Flow (cfs)
RdC-1	1.35	0	34	n/a	43	74	260	3.5	330	140	410	2.9	510	260	640	2.5	800	330	760	2.3	950
Blackhurst Gulch	2.27	0	4.5	n/a	5	40	150	3.9	170	95	270	2.8	290	200	440	2.3	490	260	540	2.1	600
RdC-2	5.05	0	41	n/a	51	130	490	3.7	610	280	800	2.8	1000	550	1300	2.3	1600	710	1600	2.2	1900
Raspberry Gulch	2.79	0	0	n/a	0	34	140	4.1	150	95	260	2.8	290	220	470	2.2	510	290	590	2.0	640
RdC-3	8.93	0	40	n/a	44	160	660	4.2	730	390	1100	2.9	1200	820	1900	2.3	2100	1100	2300	2.1	2500
RdC-4	2.30	0	3.4	n/a	4	29	180	6.2	200	84	320	3.8	350	190	530	2.8	590	260	660	2.5	720
RdC-5	13.25	0	38	n/a	42	180	880	4.9	970	480	1600	3.3	1700	1100	2700	2.5	3000	1400	3400	2.3	3700
RdC-6	16.21	0	37	n/a	41	170	880	5.2	960	480	1600	3.4	1800	1100	2900	2.6	3200	1500	3700	2.4	4000

